



# IJEAST

INTERNATIONAL JOURNAL  
OF ENGINEERING APPLIED SCIENCE  
AND TECHNOLOGY



**VOLUME : 5    ISSUE : 4    Print / Issue Publication Date: 15-Oct-2020**



**ISSN : 2455-2143**



**DOI : 10.33564/IJEAST.2020.v05i04.068**

Indexed In



[WWW.IJEAST.COM](http://WWW.IJEAST.COM)

[editor@ijeast.com](mailto:editor@ijeast.com)

# MULTI STORIED (G + 6) JEWELLERY SHOWROOM BUILDING, WIND LOAD MANUAL CALCULATION

Sandeep Kumar Sharma  
HOD (civil dept.), Shri Balaji College of Engineering & Technology,  
Jaipur, India.

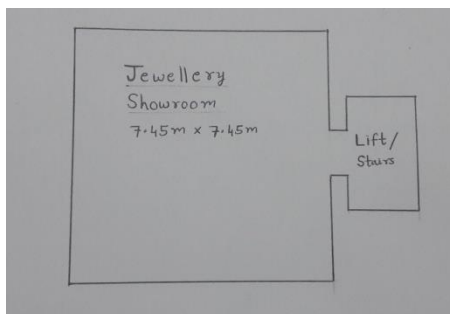
**Abstract**— Construction of multi-storied buildings are becoming necessary for modern growing cities because of deficiency of available land for construction. This problem is global. Tall buildings are susceptible to wind action. A tall building means which consists of 6 to 100 stories or more. Wind loads and its impact are the key factors for their structural design. The horizontal forces due to wind are assumed to act at each of the floor levels and they induce axial forces in the columns and bending moments in all the members of the frame.

**Keywords**— Wind loads, Tall buildings, Design wind speed

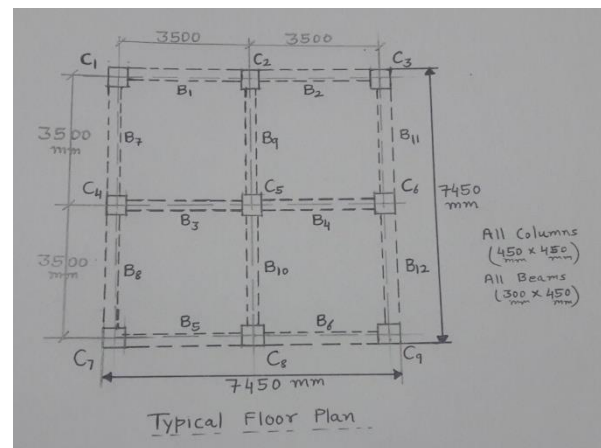
## I. INTRODUCTION

Buildings are subjected to horizontal loads due to wind pressure acting on the buildings. The horizontal wind pressures act on vertical external walls and exposed area of the buildings. The infill walls act as vertical plate supported at top and bottom by floor beams, thus transferring the loads at slab levels. For simplicity, the wind loads acting on exposed surfaces of a given storey are idealized to be supported by upper and lower floors. This G + 6 jewellery showroom building is analyzed for wind load. In wind load analysis, we adopt I.S. 875 part III.

## II. PLAN OF G + 6 STRUCTURE



This Showroom building consisting of two blocks, one is functional block (Show -Room) and another is service block (Lift / Stairs etc). The Lift / Stairs block is structurally independent of Show room block.



The typical floor plan of G + 6 jewellery showrooms building of area 55.50 sq. m. which is proposed in **Jodhpur** is shown above.

## III. STRUCTURE ANALYSIS

Our building is situated at Jodhpur. Regional basic wind speed  $V_b$  is 47 m/sec. Design period of this building is taken 50 years, so risk coefficient factor  $k_1 = 1$ . Our proposed showroom building location is main business street of the city, so I have chosen terrain category IV. The topography factor  $k_3$  and importance factor  $k_4$  both are 1. As per I.S. 875 part III, section 6.1.1 wind directionality factor  $k_d$  is taken as 0.9. Also as per section 6.1.2, the area averaging factor  $k_a$  for tributary area 89.25 sq. m. is taken as 0.814. For our case combination factor is considered as 1.

Nodes are considered at the centre of beam – column joint. Any node is in-charge of half the height of upper floor and half the height of the lower floor. For simplicity and safer side, the wind pressure at the top of the node area is determined and

will be considered over that whole area under that particular node. Force coefficient  $c_f$  for  $a/b=1$  and  $h/b = 3.423$  is 1.3. For internal frame C4- C5 - C6, wind load (F) in KN is calculated at the top of node concerning area for each node and shown in the table below.

Node	Concerning region of node	$V_0$	$k_1$	$k_2$	$k_3$	$k_4$	$V_1$	$P_z$	$k_d$	$k_s$	$k_c$	$P_d$	$C_f$	$A_e$	F
G-G	0.0 m to 1.637 m	47	1	0.8 at 1.637 m ht.	1	1	37.6 m/s	848.256 N/m <sup>2</sup>	0.9	0.814	1	621.432 N/m <sup>2</sup>	1.3	6.097 m <sup>2</sup>	4.925 KN
1-1	1.637 m to 5.025 m	47	1	0.8 at 5.025 m ht.	1	1	37.6 m/s	848.256 N/m <sup>2</sup>	0.9	0.814	1	621.432 N/m <sup>2</sup>	1.3	13.037 m <sup>2</sup>	10.532 KN
2-2	5.025 m to 8.525 m	47	1	0.8 at 8.525 m ht.	1	1	37.6 m/s	848.256 N/m <sup>2</sup>	0.9	0.814	1	621.432 N/m <sup>2</sup>	1.3	13.037 m <sup>2</sup>	10.532 KN
3-3	8.525 m to 12.025 m	47	1	0.8 at 12.025 m ht.	1	1	37.6 m/s	848.256 N/m <sup>2</sup>	0.9	0.814	1	621.432 N/m <sup>2</sup>	1.3	13.037 m <sup>2</sup>	10.532 KN
4-4	12.025 m to 15.525 m	47	1	0.8 at 15.525 m ht.	1	1	37.6 m/s	848.256 N/m <sup>2</sup>	0.9	0.814	1	621.432 N/m <sup>2</sup>	1.3	13.037 m <sup>2</sup>	10.532 KN
5-5	15.525 m to 19.025 m	47	1	0.8 at 19.025 m ht.	1	1	39.621 m/s	941.894 N/m <sup>2</sup>	0.9	0.814	1	690.031 N/m <sup>2</sup>	1.3	13.037 m <sup>2</sup>	11.695 KN
6-6	19.025 m to 22.525 m	47	1	0.843 at 22.525 m ht.	1	1	41.994 m/s	1058.098 N/m <sup>2</sup>	0.9	0.814	1	775.163 N/m <sup>2</sup>	1.3	11.081 m <sup>2</sup>	11.166 KN
7-7	22.525 m to 25.50 m	47	1	0.8935 at 25.5 m ht.	1	1									

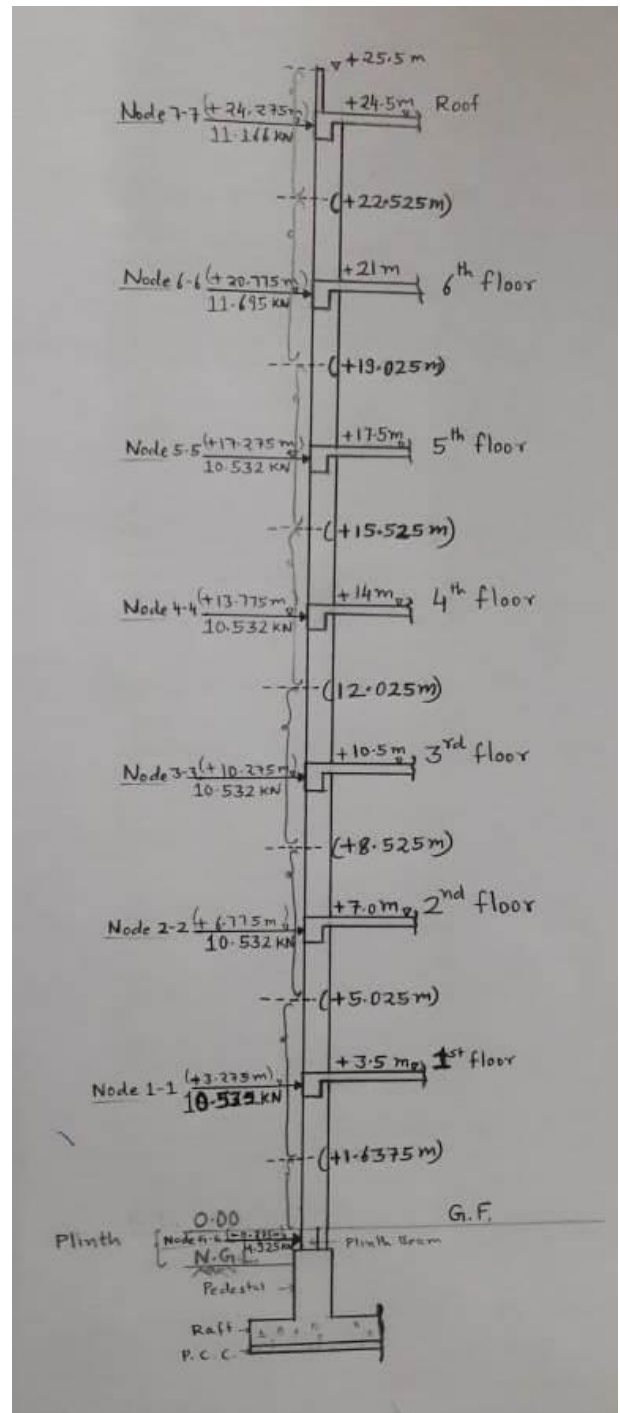


Fig. 1. Section showing levels and force acting on various node points

Table 1. Showing Calculation of Wind load

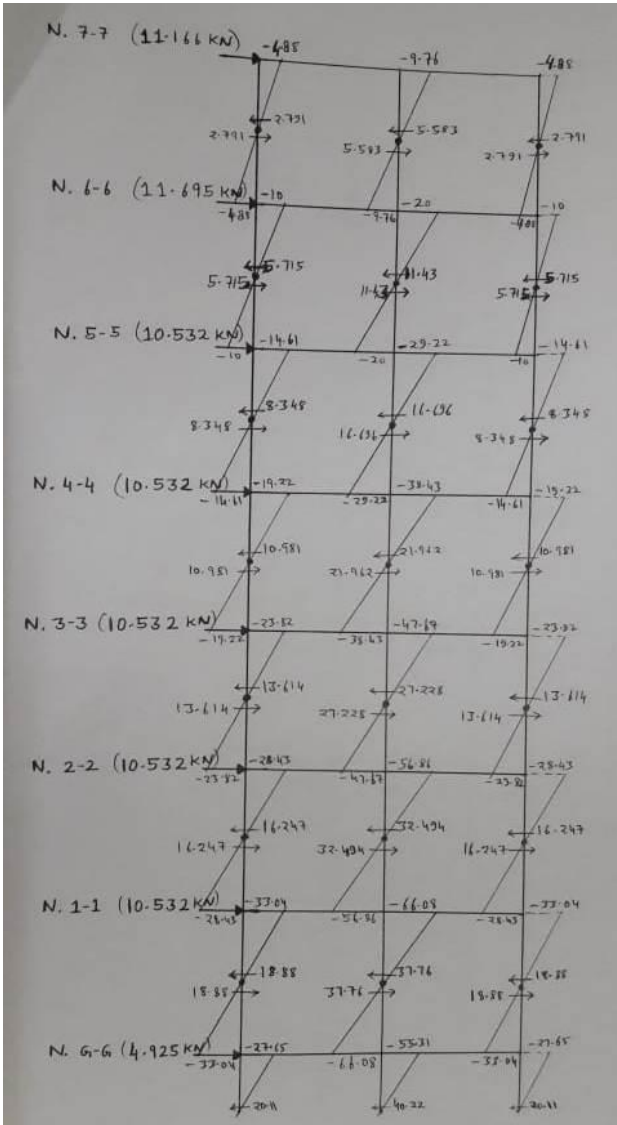


Fig. 2. Diagram showing columns shear and moment for internal frame C<sub>4</sub> – C<sub>5</sub> - C<sub>6</sub>

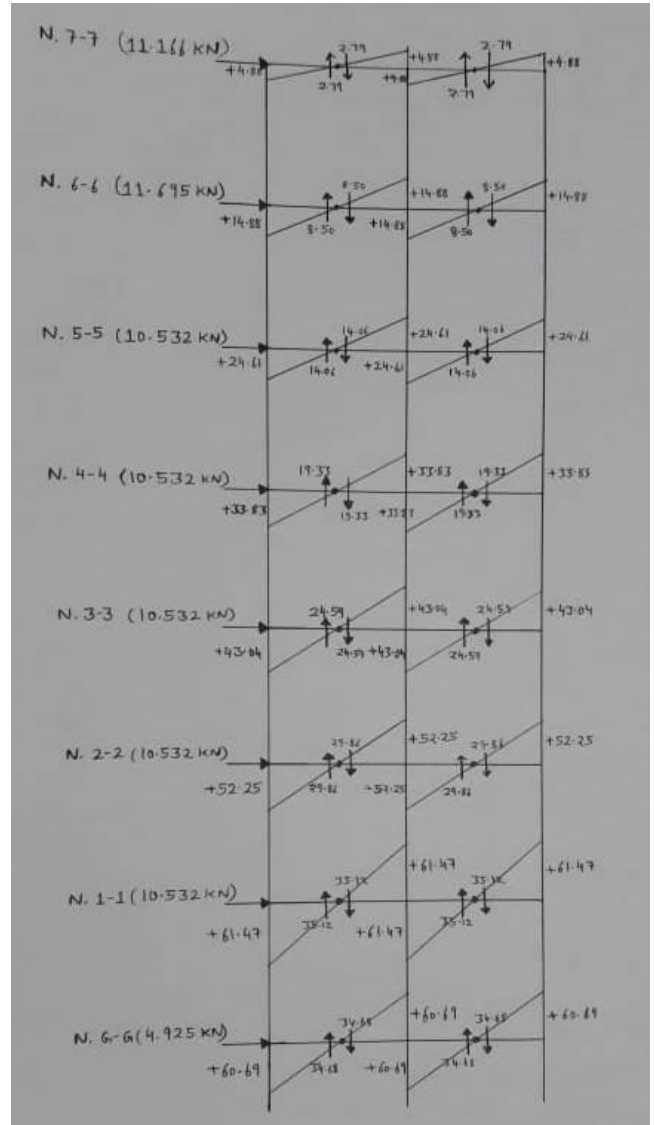


Fig. 3. Diagram showing girders moment and shear for internal frame C<sub>4</sub> – C<sub>5</sub>-C<sub>6</sub>

#### IV. CONCLUSION

As per clause 22.4.3 of Indian Standard “Plain and Reinforced Concrete – Code of Practice”, I.S. Code 456: 2000, “For lateral loads, simplified methods may be used to obtain the moments and shears for structures that are symmetrical” so here I have manually calculated details about impact of wind load on this structure. By analyzing this building, we have better idea and knowledge about the wind load action. By doing manual design we have gained more knowledge than analyze using software tools and in this project, we are more



familiar with code books also. We have faced the real engineering practice in this project.

## V. REFERENCE

- [1] Bureau of Indian Standards, Indian Standard Code of Practice for design loads (Other than Earthquake) for Buildings and Structures, Part 3 – Wind Loads, I.S. Code 875 Part III – 1987.
- [2] Krishna Raju N., 2<sup>nd</sup> Edition, Advanced Reinforced Concrete Design, CBS Publishers & Distributors Pvt. Ltd., (Pg 158- 166).
- [3] Holmes J.D.(2015), wind loading of structures, CRC Press.
- [4] Jain A.K., 6<sup>th</sup> Edition, Reinforced Concrete Limit State Design, Nem Chand & Bros – Roorkee, (Pg 563-568).
- [5] Taher Rima, Building Design for Wind Forces, Mc Graw Hill Publication.
- [6] Varghese P.C., 2<sup>nd</sup> Edition, Advance Reinforced Concrete Design, PHI Publication, (Pg 96-128).
- [7] Ghosh S.K. and Dasgupta Prabuddha, Seismic and Wind Design of Concrete Buildings, Portland Cement Association.
- [8] Gambhir M.L., Design of Reinforced Concrete Structures, PHI Learning Private Limited, (Pg 343-360, 375-405).
- [9] Simiu Emil and Yeo DongHun, 4<sup>th</sup> Edition, Wind Effects on Structures, Wiley Blackwell.
- [10] Indian Standard “Plain and Reinforced Concrete – Code of Practice”, I.S. Code 456: 2000.
- [11] Bhavikatti S.S., 3<sup>rd</sup> Edition, Advanced RCC Design (Volume -II), New Age International Publishers, (Pg 133-136).
- [12] Liu Henry, Wind Engineering “A Handbook for Structural Engineers”.
- [13] Junnarkar S.B. and Shah H.J., Mechanics of Structures (Volume - II), Charotar Publishing House Pvt.Ltd., (Pg 320- 340).
- [14] Vazirani V.N. and ratwani M.M. and Duggal S.K., Analysis of Structures (Volume – II), Khanna Publishers, (Pg 580-595).

# IJEAST

INTERNATIONAL JOURNAL  
OF ENGINEERING APPLIED SCIENCE  
AND TECHNOLOGY

## ABOUT IJEAST

International Journal of Engineering Applied Science and Technology (IJEAST) is a peer-reviewed, open access journal that publishes high-quality research papers in the field of Engineering, Applied Science and Technology.

IJEAST aims to provide a platform for researchers, academicians, and professionals to share their innovative ideas, research findings, and practical experiences with the global scientific community.

## FOCUS AREAS

- Engineering
- Applied Science
- Technology
- Innovation & Development
- Interdisciplinary Studies



### PEER REVIEWED

All submissions are rigorously peer reviewed to ensure quality.



### OPEN ACCESS

Free and unrestricted access to research for all.



### GLOBAL REACH

Connecting researchers and professionals worldwide.



### TIMELY PUBLICATION

We ensure a swift and efficient publication process.



For more information, visit our website

[www.ijeast.com](http://www.ijeast.com)



INTERNATIONAL JOURNAL  
OF ENGINEERING APPLIED SCIENCE  
AND TECHNOLOGY

✉ [editor@ijeast.com](mailto:editor@ijeast.com)

🌐 [www.ijeast.com](http://www.ijeast.com)

📍 India



2455-2143