



IJEAST

INTERNATIONAL JOURNAL
OF ENGINEERING APPLIED SCIENCE
AND TECHNOLOGY



VOLUME : 5 ISSUE : 10 Print / Issue Publication Date: 25-Apr-2021



ISSN : 2455-2143



DOI : 10.33564/IJEAST.2021.v05i10.041

Indexed In



WWW.IJEAST.COM

editor@ijeast.com



OPTIMAL POWER FLOW USING STATCOM

Tanisha Bharol
Electrical and
Electronics
Department,
Bharati
Vidyapeeth
College of
Engineering,
New Delhi, India

Pranjali Bora
Electrical and
Electronics
Department,
Bharati
Vidyapeeth
College of
Engineering,
New Delhi, India

Sravani Sai M
Electrical and
Electronics
Department,
Bharati
Vidyapeeth
College of
Engineering,
New Delhi, India

Dhruvi Bansal
Electrical and
Electronics
Department,
Bharati
Vidyapeeth
College of
Engineering,
New Delhi, India

Dr. Sandeep
Sharma
Electrical and
Electronics
Department,
Bharati
Vidyapeeth
College of
Engineering,
New Delhi, India

Abstract— In power system, active power flow is the main concern in order to manage the demand supply. The maximum use of the transmission lines under their stability limit is very much required. Flexible alternating current transmission system (FACTS) device are very much useful to control power system parameters. A STATCOM (STATCOM) is a FACTS device which is able to control active and reactive power with voltage magnitude and phase angle. In this paper, STATCOM is used in a 10 bus system to control the flow of active power under contingency condition. Simulation result shows the effectiveness of the STATCOM in providing the optimal power flow in the power system considered here.

Keywords— STATCOM, optimal power flow, active power, reactive power.

I. INTRODUCTION

STATCOM can provide optimal power flow control is stated by Akagi et al (2008). In this paper, appropriate models are developed that can be integrated with the power flow algorithms. The modeling of STATCOM for the solution of optimal power flow (OPF) problem is explained by Bina et al (2008). The nonlinear equations are solved by Newton's method. A method to study optimal active power flow problem is developed by Villa Jaén et al (2008). This developed method considers the optimal power flow (OPF) problem as modified OPF. A paper presents solution of optimal power flow by Jovicic et al (2008). In this paper, a STATCOM implementation with its different control modes within the robust nonlinear interior-point OPF is done. A paper presents the use of STATCOM in restructured power system by Shah et al (2009). In this paper, a model of power flow studies incorporating a lossless model of STATCOM

is presented. SVC and STATCOM modeling for longitudinal system to formulate the optimal power flow problem is done by Sternberger et al (2008). Sequential Quadratic programming technique is used for the solution of OPF problem. A paper formulates a nonlinear optimization problem using STATCOM to maximize the social welfare by Li et al (2008). In this paper, two step approaches is used for STATCOM for congestion management 1) the location of STATCOM, 2) proper setting of its control parameters. A linear programming (LP) based optimal power flow (OPF) algorithm is exhibited by Çetin et al (2008). This algorithm is used for STATCOM's corrective working and ease from overload and voltage violation due to system constraints. The objective is to minimize the load-ability of the heavily load lines. A screening technique is proposed in order to find the optimal location of STATCOM by Gupta et al (2009). This technique requires only one OPF to find the STATCOM parameter for transmission line. A method involving the optimization constraints of Newton method for finding the optimal reference input value for STATCOM for steady state operation is developed by Segundo-Ramírez et al (2009). This method is concerned with a high level line optimization control. STATCOM is explained for unbalanced condition is explained by Song et al (2009). The cascade multilevel and modular multilevel STATCOM is explained by Sternberger et al (2009) and Bina et al (2010) respectively.

The organization of this paper is done in following manner that MATLAB/Simulink model description is given in Section 2 whereas simulation results related to voltage, active power, and reactive power with STATCOM along different contingency condition of transformers are exhibited in section 3 in details. Section 4 represents the conclusion.

II. MATLAB/SIMULINK MODEL DESCRIPTION

II.1 Electric power system model

The system having two generating stations, ten buses, three transformers, four three phase loads, four different transmission lines and. This model (as shown in Figure 1) is simulated with STATCOM and results are recorded in

both graphical and tabular formats.

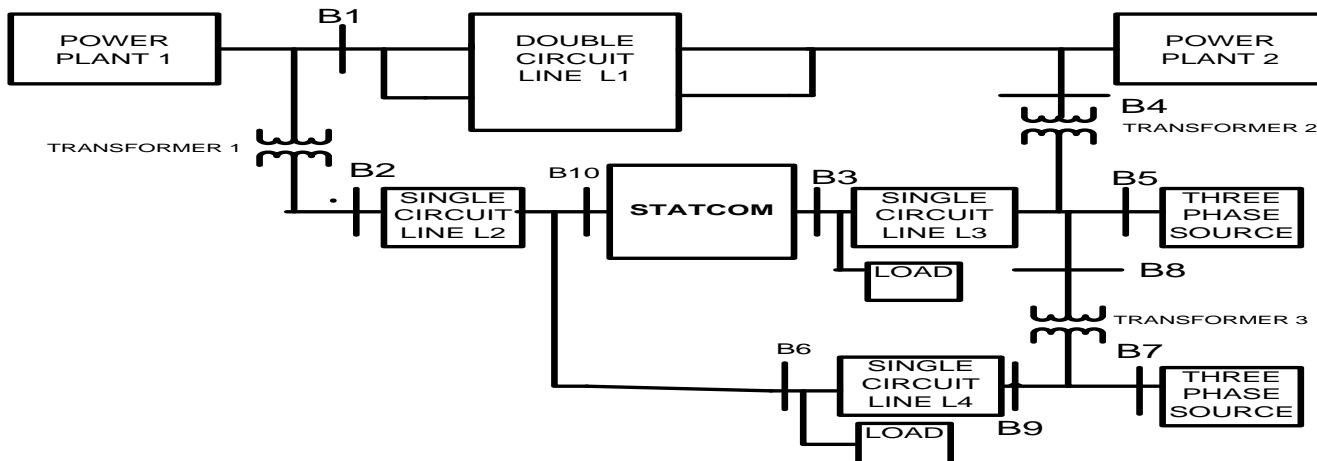


Figure1: Power system model with 10 bus system using STATCOM

This above simulation model is used to study the optimal power flow. Transformer 2 and Transformer 3 are taken into consideration. Transformer 1 and 2 are of capacity of

1200 MVA. Three unit of 400 MVA are considered for specification. Some contingency cases are taken into consideration for optimal power flow.

Table 1. Description of contingency cases for transformer 2 and transformer 3

Contingency case	Rating of transformer 2	Rating of transformer 3
Case 1	3*400 MVA	3*400 MVA
Case 2	3*400 MVA	2*400 MVA
Case 3	2*400 MVA	3*400 MVA

III. SIMULATION RESULTS

The simulation result are taken for three different cases of the transformer 2 and transformer 3. The result of each case in shown numerically.

III.1 Case 1 when no transformer is out of service

The simulation result for case 1 when no transformer is out of service, the simulation result are shown in table 2 and Fig. 2 to Fig. 7. The active power at B4 and B8 are 882.3 MW and 580 MW



Table 2. Voltage, active power, reactive power with STATCOM for case 1.

BUS NO.	WITH STATCOM		
	VPOS. SEQ.	ACTIVE POWER (MW)	REACTIVE POWER (MVAR)
B1	0.9457	121.1	-220.9
B2	0.9266	573.4	103.8
B3	0.9145	231.2	2522
B4	0.8771	882.3	1166
B5	0.7181	375.7	-3052
B6	0.9145	325.2	-2306
B7	1.089	642.5	1405
B8	1.561	580	5886
B9	1.089	146.2	-2685
B10	0.9145	0	0

III.2 Case 2 when one transformer of transformer three is out of service

The simulation result for case 2 when no transformer is

out of service, the simulation result are shown in table 3 and Fig. 8 to Fig. 13. The active power at B4 and B8 are 891.5 MW and 464.1 MW.

Table 3. Voltage, active power, reactive power with STATCOM for case 2.

BUS NO.	WITH STATCOM		
	VPOS. SEQ.	ACTIVE POWER (MW)	REACTIVE POWER (MVAR)
B1	0.955	94.07	-187.1
B2	0.94	567.8	74.35
B3	0.9303	202.5	2146
B4	0.8972	871.5	989.6
B5	0.7658	429.8	-2712
B6	0.9303	359.7	-1955
B7	1.075	514.5	1166
B8	1.665	464.1	5231
B9	1.075	154.5	-2199
B10	0.9303	0	0



III.3 Case 3 when one transformer of transformer 2 is out of service

The simulation result for case 3 when no

transformer is out of service, the simulation result are shown in table 3 and Fig. 14 to Fig. 19. The active power at B4 and B8 are 790.3 MW and 546.8 MW.

Table 4. Voltage, active power, reactive power with STATCOM for case 3.

WITH STATCOM			
BUS NO.	VPOS. SEQ.	ACTIVE POWER (MW)	REACTIVE POWER (MVAR)
B1	0.9464	115.1	-175.8
B2	0.9228	616.8	126.1
B3	0.909	328.4	2522
B4	0.8982	780.3	963.3
B5	0.711	335.8	-3097
B6	0.909	350.5	-2295
B7	1.084	678.6	1308
B8	1.546	516.8	5706
B9	1.084	123.3	-2677
B10	0.909	0	0

IV. CONCLUSION

STATCOM is a FACTS device which is able to control the power system parameters such as active and reactive power with voltage magnitude and phase angle. In this paper, STATCOM is used for an application of power system which is optimal power flow under contingency condition of transformers. In all the cases STATCOM shows its effectiveness in controlling the active power and achieving the optimal power flow on the buses B4 and B8. Hence STATCOM can be used for the flow of optimal power flow.

V. REFERENCES

[1] Akagi, H., Fujita, H., Yonetani, S. and Kondo, Y., (2008). A 6.6-kV transformerless STATCOM based on a five-level diode-clamped PWM converter: System design and experimentation of a 200-V 10-kVA laboratory model. *IEEE Transactions on Industry applications*, 44(2), (pp.672-680).

[2] Bina, M.T. and Bhat, A.K., (2008) Averaging technique for the modeling of STATCOM and active filters. *IEEE Transactions on Power Electronics*, 23(2), (pp.723-734)

[3] de la Villa Jaén, A., Acha, E. and Expósito, A.G., (2008) Voltage source converter modeling for power system state estimation: STATCOM and VSC-HVDC. *IEEE Transactions on Power Systems*, 23(4), (pp.1552-1559).

[4] Jovcic, D. and Sternberger, R., (2008). Frequency-domain analytical model for a cascaded multilevel STATCOM. *IEEE transactions on power delivery*, 23(4), (pp.2139-2147).

[5] Shah, N.M., Sood, V.K. and Ramachandran, V., (2009). Modeling, control and simulation of a chain link STATCOM in EMTP-RV. *Electric power systems research*, 79(3), (pp.474-483).

[6] Sternberger, R. and Jovcic, D., (2008). Theoretical framework for minimizing converter losses and



- harmonics in a multilevel STATCOM. IEEE Transactions on Power Delivery, 23(4), (pp.2376-2384).
- [7] Li, Y. and Wu, B., (2008). A novel DC voltage detection technique in the CHB inverter-based STATCOM. IEEE Transactions on Power Delivery, 23(3), (pp.1613-1619).
 - [8] Çetin, A. and Ermis, M., (2009). VSC-based D-STATCOM with selective harmonic elimination. IEEE Transactions on Industry Applications, 45(3), (pp.1000-1015).
 - [9] Gupta, R., Ghosh, A. and Joshi, A., (2009). Characteristic analysis for multisampled digital implementation of fixed-switching-frequency closed-loop modulation of voltage-source inverter. IEEE Transactions on industrial electronics, 56(7), (pp.2382-2392).
 - [10] Segundo-Ramírez, J. and Medina, A., (2009). Modeling of FACTS devices based on SPWM VSCs. IEEE Transactions on Power Delivery, 24(4), (pp.1815-1823).
 - [11] Song, Q. and Liu, W., (2009). Control of a cascade STATCOM with star configuration under unbalanced conditions. IEEE Transactions on Power Electronics, 24(1), (pp.45-58).
 - [12] Sternberger, R. and Jovcic, D., (2009). Analytical modeling of a square-wave-controlled cascaded multilevel STATCOM. IEEE Transactions on Power Delivery, 24(4), (pp.2261-2269).
 - [13] Bina, M.T., (2010). A transformerless medium-voltage STATCOM topology based on extended modular multilevel converters. IEEE Transactions on Power Electronics, 26(5), (pp.1534-1545).

IJEAST

INTERNATIONAL JOURNAL
OF ENGINEERING APPLIED SCIENCE
AND TECHNOLOGY

ABOUT IJEAST

International Journal of Engineering Applied Science and Technology (IJEAST) is a peer-reviewed, open access journal that publishes high-quality research papers in the field of Engineering, Applied Science and Technology.

IJEAST aims to provide a platform for researchers, academicians, and professionals to share their innovative ideas, research findings, and practical experiences with the global scientific community.

FOCUS AREAS

- Engineering
- Applied Science
- Technology
- Innovation & Development
- Interdisciplinary Studies



PEER REVIEWED

All submissions are rigorously peer reviewed to ensure quality.



OPEN ACCESS

Free and unrestricted access to research for all.



GLOBAL REACH

Connecting researchers and professionals worldwide.



TIMELY PUBLICATION

We ensure a swift and efficient publication process.



For more information, visit our website
www.ijeast.com



INTERNATIONAL JOURNAL
OF ENGINEERING APPLIED SCIENCE
AND TECHNOLOGY

✉ editor@ijeast.com

🌐 www.ijeast.com

📍 India



2455-2143