



IJEAST

INTERNATIONAL JOURNAL
OF ENGINEERING APPLIED SCIENCE
AND TECHNOLOGY



VOLUME : 6 ISSUE : 12 Print / Issue Publication Date: 03-Jun-2022



ISSN : 2455-2143



DOI : 10.33564/IJEAST.2022.v06i12.042

Indexed In



WWW.IJEAST.COM

editor@ijeast.com

CURRENT TRENDS IN FORENSIC PALYNOLOGY: A REVIEW STUDY

Vaishnavi,
BSc Forensic Science Student
Department of Forensic Science
Yenepoya Institute of Arts, Science,
Commerce & Management, Mangalore,
Karnataka, India

Mohith S Yadav
Lecturer
Department of Forensic Science
Yenepoya Institute of Arts, Science, Commerce & Management
Mangalore, Karnataka, India

Abstract— Forensic Palynology is the study of natural organic matter to establish a chronological or environmental history. It is often used in palynology (palynology being the study of pollen and spores) to reconstruct past climate and vegetation changes. If the stratigraphic setting is known, the deposition date can be determined by organic matter in the sediment. The primary factors which dictate the abundance of organic matter are changes in climate and vegetation. Modern forensic palynology has made considerable advances in examining environmental samples, with many studies now showing that the "structure of pollen grains, in particular, provides an indicator of a sample's environmental and occupational history." It, therefore, provides "a way of finding out what happened before and during an environmental exposure." The field of forensic palynology is concerned with the study and application of plant and soil organic and biotic evidence objectively and scientifically in order to provide evidence of environmental and occupational processes and conditions".

Keywords— Botany, Crimes, Daubert's guidelines, Forensic Palynology, Investigation, Legal cases, Plant DNA, Pollen grains, Palynology, Structure of Pollen, and Spores.

I. INTRODUCTION

In Forensic Palynology, the investigation of pollen and spores to prove connections in criminal cases or refute connections has been part of the forensic toolkit since 1959, when the analysis of pollen spores stands first practiced in connection with forensic investigations in Austria. As a specialized field, however, the field has slowly gained global momentum. Palynology refers to applying the study of pollen spores in

legal matters, which remains used to establish connections between objects, people, and places based on the analysis and identification of pollen. Forensics and palynology are related applications of the pollen and spore investigation in legal cases, which remain used to establish relationships between objects, people, and places based on analysis and pollen identification. Palynology remains used in the examination of its sample types, which leads to acceptability in court. The possibility of forensic palynology based on the quality of pollen enables them to withstand the time and limitations in terms of the results.[1]

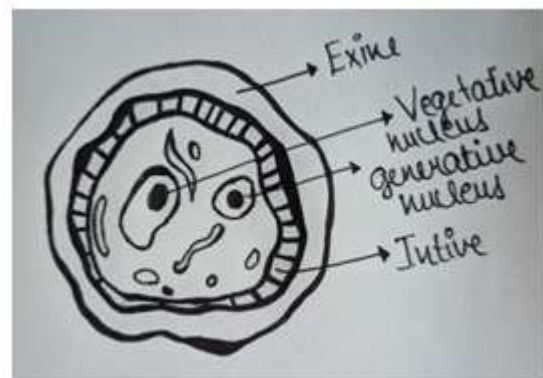


Fig. 1. Sexual View of a Mature Pollen Grain.

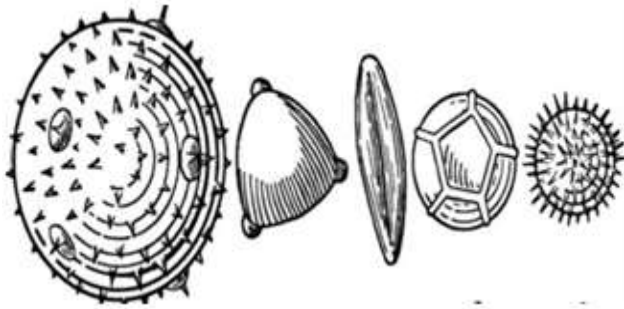


Fig. 2. Image of pollen grains.

II. ADVANCED METHODS IN FORENSIC PALYNOLOGY

Pollen refers to a powder containing the male gametophyte, the seed-producing plant produced and distributed to pollinate and reproduce. The pollen grains have a hard coat that protects them from one plant to another and makes them resistant to destruction. Pollen is a powder containing male gametophyte seeds produced and scattered by plants to pollinate and reproduce. Pollen can remain classified by size, shape, colour, and characteristics (e.g., pollen opening, ornamentation).

The distribution mechanism by which plant pollen is absorbed is transferred. Pollen can reveal a person or object in a region of the world or a country, and different parts of a single garden can have characteristic pollen accumulations. A pollen accumulation is a pollen sample from which a variety of plant species emerge. Pollen can reveal a particular region of the world, a country, or even different parts of a single garden through a pronounced accumulation of pollen. Removing pollen from the crime scene may help identify certain plant species that may have contacted the victim or point to evidence that does not belong in the area. [9]



Fig. 3. Pollen from Celandine Under a Microscope.

Pollen spores are tiny but can be produced in large quantities and distributed by various mechanisms, and are resistant to destruction. They are too small to be seen without the naked eye (7-200 μm). It is why criminals often find themselves collecting pollen spores at crime scenes. Pollen spores can

attach to most surfaces and settle in clothing, meaning that washing with detergents does not remove the grains.[4]

Palynology is the study of palynomorphs, microscopic structures of animal, plant origin resistant to decay. Forensic palynology can be carried out by analyzing pollen grains under a microscope and comparing them to so-called pollen morphology. However, the signature of the existing pollen grains is site-specific, as different plant species occur in different areas and over time and bloom at different times. Therefore, it is anything but an ideal biomarker for interfacing individuals and objects to clear places and times and is key to forensic examinations.[11]

Although DNA barcoding of pollen has not remained used in forensic palynology, similar techniques have stood used to test the quality of honey and determine the plant species that bees eat. The use of pollen DNA profiles in forensic investigations has also remained used. The forensic analysis of pollen grains remained used in a fictional crime novel titled Probable Cause (Pearson 1991) as a theme.⁵ They have a reference library of over 6,000 pollen species housed in the Customs and Border Protection Laboratory and access to 30,000 additional samples from nearby fields and the Museum of Natural History (Illinois, USA). There are more than 380,000 different types of pollen grains that palynologists must use microscopes to identify which grains they find in the eye.[2]

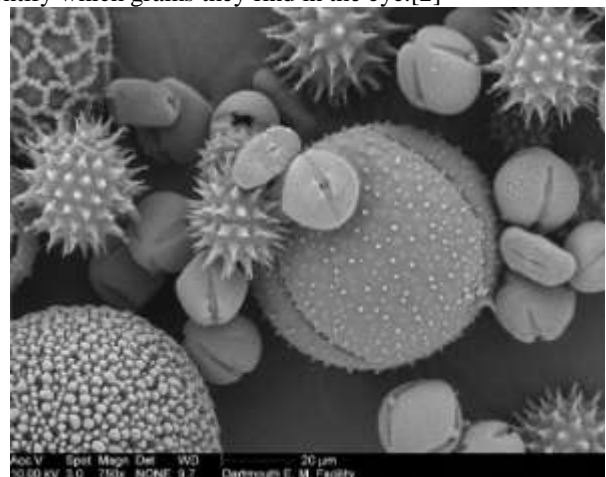


Fig. 4. SEM images of pollen from the Electron Microscope Facility.

The first report on forensic palynology to solve crimes was investigating a murder in Austria in 1959. The case remained solved by linking the frequency of a particular type of pollen found on the victim to that at the murder scene. Unfortunately, forensic palynology's potential benefits stand not currently exploited, as it relies on specialized experts to identify pollen under the microscope. Recently, researchers have developed new techniques to identify pollen using genetics. These new techniques will allow the identification of a large number of pollen samples, and we believe that this has the potential to



change the field and allow us to harness the power of pollen to solve crimes.[1]

For a good reason, forensic palynology, the use of pollen spores to solve both criminal and civil cases, is not obscure. It plays a recurring role in crimes that can stand seen in bones.¹ For example, it was instrumental in the widely-published investigation of the Iceman and helped convict Bosnian war criminals. Because pollen is tiny and abundant when present at the scene, it is a valuable tool for forensic investigations. Forensic palynologists have compared pollen spores collected as evidence to pollen from known plant species in the past. Computers can now identify several spores and pollen of different plant species in a sample. It has the potential to give a time-stamped geographical fingerprint to evidence contaminated with Pollen.[7]

The pollen can remain classified according to size, shape, colour, Pollen opening characteristics, and decorations. A pollen composition depicts pollen samples of various plant species. For example, a body believed to be moving and carrying pollen grains can stand analyzed to determine the most likely location. Palynology can likewise decide the area of a crime location, regardless of whether it is anything but known. Based on the type of pollen and spores found on the specimens, it can limit a piece of evidence to a specific place where a particular plant has grown in a particular season and not just weeks ago.[12]

The signature of the present pollen grains is specific to this particular place, as different species of plant breed occur in different areas and over time and bloom at different times. It makes pollen an ideal biomarker for connecting people and objects to a specific place and time, central to forensic investigations. Pollen spores can remain obtained from a variety of objects, including the body.[2]

Everyone knows the expected production and dispersion pattern of spores and pollen (pollen rain) of plants in a given region. One of the most common types of pollen fingerprint is the expected sample that comes from that region (Bryant, 1989). The use of trace evidence in pollen grains and spores has played a prominent role in court proceedings and has given forensic palynology a unique recognition in today's world. In addition, new evidence has come to light that pollen grains or spores can be deadly to pollen allergy, an important finding from the study of pollen used to kill allergic Pollen. [6-10]

Techniques for collecting, processing, and analyzing forensic pollen samples will stand discussed. The analysis examines the presence or absence of certain pollen types. Students use digital pollen databases and Google Earth to link pollen traces to evidence at specific crime scenes.

Pollen traces indicated that the suspect was at the scene, and the type of pollen found on the suspect's clothing matched the pollen found at the scene. The use of trace evidence in pollen grains and spores has played a prominent role in court proceedings and has given forensic palynology a unique recognition in today's world. In addition, new evidence has come to light that pollen grains or spores can be deadly to

pollen allergy, an important finding from the study of pollen used to kill allergic Pollen. [7-10]

III. SIGNIFICANCE OF FORENSIC PALYNOLOGY

Basically, it is applied to collect and examine the pollen evidence that is found on the clothes of the victim or the suspect or any other objects of interest, especially in the cases like homicide, rape, burglary, genocide, bombings, forgery, kidnapping, and many more. It gives aid to the investigation by establishing the connection between the victim or the suspect and the crime scene.

It also helps in identifying whether the crime scene is primary or secondary. Forensic palynology is one of the important tools of investigation that deals with the application of palynology to legal matters. It basically undertakes the examination of the microscopic pollen grains and different kinds of spores (fungi, bryophytes, and ferns). The importance of forensic palynology includes the analysis of the trace evidence (pollens & spores) found at the crime scene. Gives significant information regarding the environment of the object; for instance, where it was or from where it has come. Traces the history of travelling. Determines how old the human remains are. Apart from all these, it helps to narrow down the suspect list and it also can be used to prove or disprove an alibi.

IV. DISCUSSION AND ANALYSIS

Boston police contacted National Centre for Missing and Exploited Children (NCMEC) and requested the evidence be analyzed as quickly as possible. The NCMEC contacted Andrew Laurence, the chief U.S. Customs and Border Protection officer.⁷ Forensic analysis of dust found on the stuffed lizard suggested it had stood assembled in Europe. Mainly pollen spores are beneficial due to the characteristics mentioned above. Pollen spores are tiny, produce enormous amounts, remain distributed by various mechanisms, and are resistant to destruction. In addition, the pollen grains have a hard coat that protects them from one plant to another, making them very resistant to destruction.

The yellow powder clogs the windshield in spring, pollen from microscopic seeds. Since air is widespread on most surfaces, we inhale pollen and spores into our lungs, which stick to our clothes. During the 1960s and 1970s, other European criminal cases utilized dust as a forensic tool to interface presumed cases to crime locations. Forensic palynology root in America in 1975 when Bryant, a botanist who studied pollen on archaeological sites, began analyzing it for forensic purposes. Petrified pollen, which can be brushed off or found in the dust at crime scenes, can be a valuable clue for forensic palynologists.

Forensic palynology is the analysis of various types of pollen grains and spores in a legal context. It refers to pollen and other spores in court proceedings as evidence used to clarify criminal issues and prove or refute the relationship between people and the crime scene. In forensic palynology, the examination of



pollen spores to prove/refute connections have been part of the forensic toolkit since 1959, when the analysis of pollen spores

in connection with forensic investigations in Austria remained first practiced. [15-20]

V. COMPARISON TABLE

YEAR	METHODS	FEATURES
1930-1950	Light Microscopy	Low Cost, Availability. Low Taxonomic Resolution, Subjective and Poor Replicability.
1986	Electron Microscopy	Improved Resolution, Accuracy, and Presentation. Limited Scope.
2000-2018	Raman Spectroscopy, Stable Isotope Analysis, X-ray Diffraction, DNA Barcoding.	Improved Accuracy and Objectivity; Wider Acceptance. Required Further Optimization and Validation.
2019 and above	Orthogonal Analysis	Improved Evidential Weighting

Table 1 show the comparison from 1930s to 2020s advancements in analysis of the samples and the above methods has a better performance than others.

VI. CONCLUSION

Forensic Palynology is one of the essential tools of forensic science mainly utilized for obtaining trace evidence from the suspect or victims or any other items that are suspected to be associated with the Crime Scene. Apart from this, it is utilized for determining the geolocation of the samples and the foundation of forensic palynology is based on the discipline of pollen analysis. Though it is an underutilized tool, it has gained recognition due to the capability of providing information regarding the Pollen and the spores that are found at the Crime Scene and are trapped on the clothes or any other items of interest mainly for resolving the Civil and criminal cases. Forensic palynology can be traced back to Austria [50 years ago] and recently many other countries have also started using it. Although in countries like the United States it is underutilized. It can be concluded that there are several cases that have been solved with the help of forensic palynology and most of the cases are homicides, burglary, and some related to drugs. Currently, the United Kingdom stands on top when it comes to the utilization of forensic palynology which is followed by New Zealand. Australia, Canada, Europe, and even a few Asian countries are now using forensic palynology in criminal cases. Countries like the United States where forensic palynology is rarely used need to take some initiative for development in that particular field.

VII. REFERENCE

[1] Forensic Palynology – The Forensics Library. (2021). Retrieved 21 June 2021, from <https://aboutforensics.co.uk/forensic-palynology/>.

[2] SAWYER, A., 2020. A silent witness: how analysis of pollen can solve crimes. [online] BioTechniques. Available at: <https://www.biotechniques.com/analytical-chemistry/a-silent-witness-how-analysis-of-pollen-can-solve-crimes/>.

[3] Patricia E. J. Wiltshire (2016) Protocols for forensic palynology, Palynology, 40:1, 4-24, DOI: 10.1080/01916122.2015.1091138 F. Gonzalez and J. Hernandez, " A tutorial on Digital Watermarking ", In IEEE annual Carnahan conference on security technology, Spain, 1999.

[4] Saqer S. Alotaibi, Samy M. Sayed, Manal Alosaimi, Raghad Alharthi, Aseel Banjar, Nosaiba Abdulqader, Reem Alhamed, Pollen molecular biology: Applications in the forensic palynology and prospects: A review, Volume27, Issue5, 2020, Pages 1185-1190,

[5] Mark O. Ezebgogu, Identifying the scene of a crime through pollen analysis, Science & Justice, Volume 61, Issue 3, 2021, Pages 205-213.

[6] Bryant, V., Jones, J., & Mildenhall, D. (1990). Forensic Palynology in the United States of America. Palynology, 14, 193-208..

[7] Green E. How pollen solves crimes [Internet]. The Atlantic. Atlantic Media Company; 2015

[8] Abhishek.legaldesire. Importance of forensic palynology in criminal investigation, Legal Desire. 2020.

[9] Steven L. Babcock & Sophie Warny (2014) Forensic Palynology as Classroom Inquiry, Science Activities, 51:4, 116-128.



- [10] Dallas, C. and Mildenhall, D Example of the Use of Forensic Palynology in Assessing an Alibi | Office of Justice Programs, 2004
- [11] Mildenhall DC, Wiltshire PE, Bryant VM. Forensic palynology: why do it and how it works. *Forensic Sci Int.* 2006 Nov 22;163(3):163-72.
- [12] Ward, J, Peakall R, Gilmore SR, Robertson J. A molecular identification system for grasses: a novel technology for forensic botany. *Forensic Sci Int.* 2005 Sep 10;152(2-3):121-31.
- [13] Bell, K., Brosi, B., & Burgess. K, How pollen could be the next big thing in forensic investigations, 2016.
- [14] Aranda, R., & Okamoto, K. Review and future prospects for DNA barcoding methods in forensic palynology, 2015.
- [15] Laurence A.R., Bryant V.M, Forensic Palynology. In: Bruinsma G., Weisburd D. (eds) *Encyclopedia of Criminology and Criminal Justice.* Springer, New York, NY, 2014.
- [16] Boi, M, The Importance of Palynology in Forensic Investigations. *Forensic Science & Addiction Research,* 3(5), 294–295, 2018.
- [17] Mason, M, The power of pollen: how CBP is at the forefront of using pollen as a new forensic tool, 2015.
- [18] Creation, M. This Image Pollen Grains Study Pollen Stock Vector (Royalty Free) 1400891003, 2020.
- [19] Ross, D. This Image Pollen from Celandine Under a Microscope on a Black Background (Royalty Free) 1338817691, 2020
- [20] Shew,H.ForensicPalynology,2017,
<https://alabamaallergy.com/2017/06/19/forensic-palynology/>

IJEAST

INTERNATIONAL JOURNAL
OF ENGINEERING APPLIED SCIENCE
AND TECHNOLOGY

ABOUT IJEAST

International Journal of Engineering Applied Science and Technology (IJEAST) is a peer-reviewed, open access journal that publishes high-quality research papers in the field of Engineering, Applied Science and Technology.

IJEAST aims to provide a platform for researchers, academicians, and professionals to share their innovative ideas, research findings, and practical experiences with the global scientific community.

FOCUS AREAS

- Engineering
- Applied Science
- Technology
- Innovation & Development
- Interdisciplinary Studies



PEER REVIEWED

All submissions are rigorously peer reviewed to ensure quality.



OPEN ACCESS

Free and unrestricted access to research for all.



GLOBAL REACH

Connecting researchers and professionals worldwide.



TIMELY PUBLICATION

We ensure a swift and efficient publication process.



For more information, visit our website

www.ijeast.com



INTERNATIONAL JOURNAL
OF ENGINEERING APPLIED SCIENCE
AND TECHNOLOGY

✉ editor@ijeast.com

🌐 www.ijeast.com

📍 India



2455-2143